

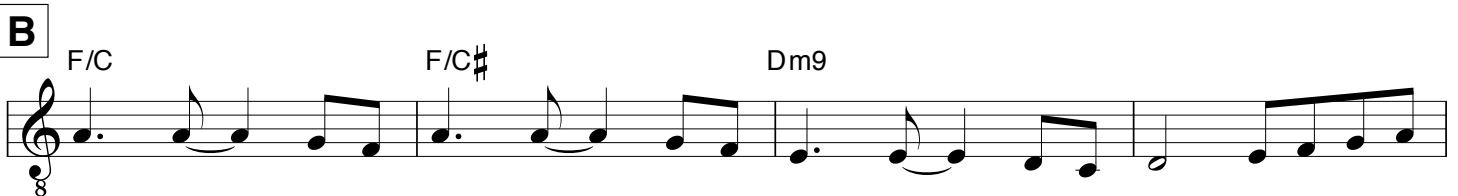
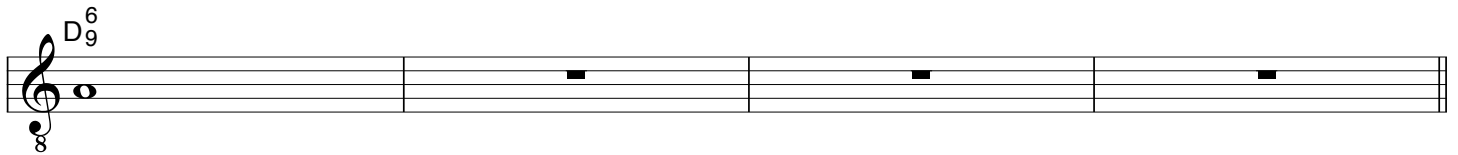
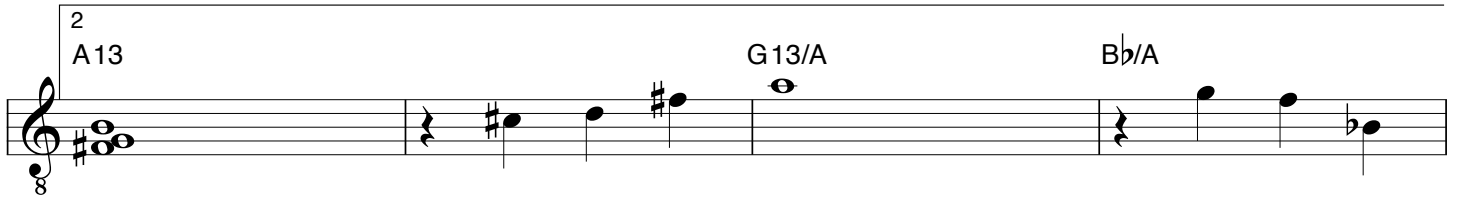
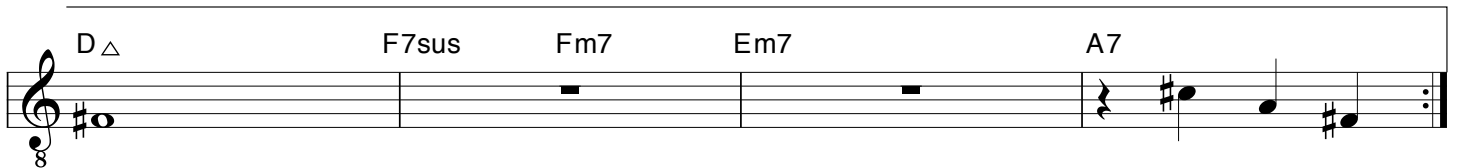
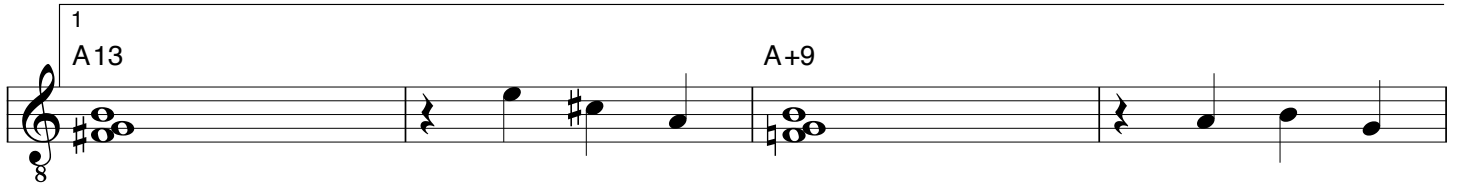
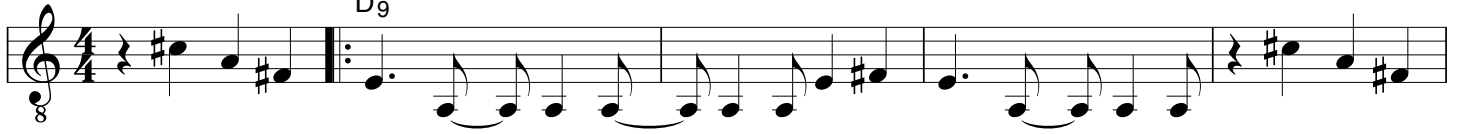
# Tomate Maduro (Ripe Tomato)

3517

by Peter Kienle  
1/30/2013

**A** Latin

D<sub>9</sub><sup>6</sup>



Tomate Maduro (Ripe Tomato) (2)

Musical staff with notes and chords: F/C, F/C#, Dm7, G7

Musical staff with notes and chords: Gm7, A7

C

Musical staff with notes and chords: D<sup>6</sup><sub>9</sub>, Em7, D/F#, G $\Delta$ , A13, Bm7, C<sup>6</sup><sub>9</sub>, A13/C#

Musical staff with notes and chords: D<sup>6</sup><sub>9</sub>, Em7, D/F#, G $\Delta$ , A13, Bm7, C<sup>6</sup><sub>9</sub>, A13/C#

Musical staff with notes and chords: G<sup>6</sup><sub>9</sub>, Gm9